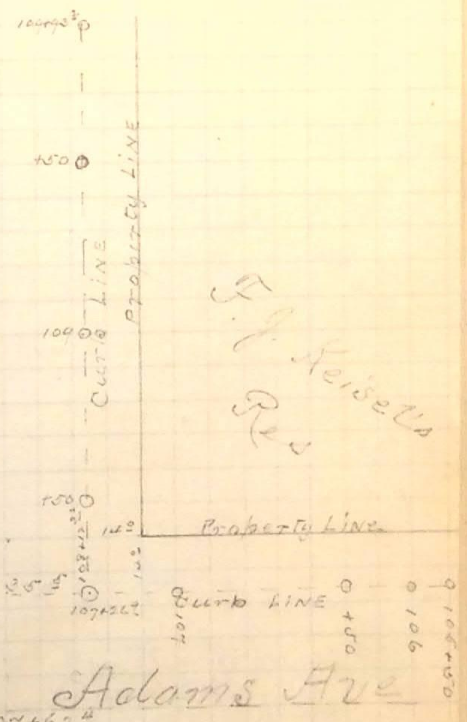


J.H. Knight & party
Side of Adams between 25th & 26th
Adams & Jefferson & on South
In F. Kuhl on 25th St set
Survey to set curb Grades
Thursday P.M. Apr 24th 1890.

Center Line 25th Street



F. Heiselt
Res

Center Line Adams Ave

For Levels See Level Book No. 1. P. Page 70.